

# TAB C

## New Park Location Process

Decisions, decisions, decisions...



## Quick Rundown

- › Everything is related by location.
- › Spatial Analysis – A variety of analytic techniques used to show the relationships between different features and their location on the Earth.
- › GIS – Geographic Information Systems - the software used in spatial analysis. I use ESRI's ArcMap.

## Immediate Goal

- › Using a series of spatial analyses to determine several possible new park locations within the CRA and the city of Palmetto.
- › To locate parcels which could be converted into a park

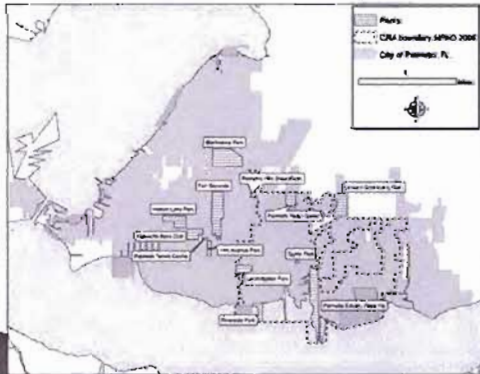
## Ultimate Goal

- › To determine a location which will serve to reduce blight, per CRA mandate, while giving the local residents a park within walking distance, and giving all citizens of Palmetto something to be proud of and enjoy.

## Methods

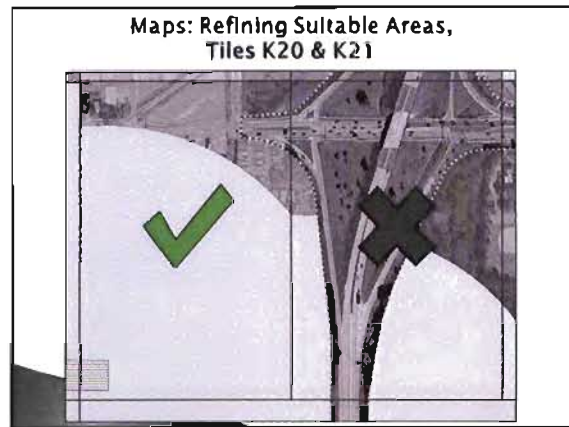
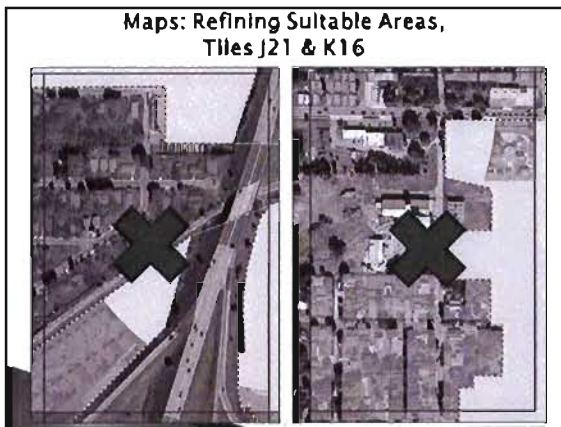
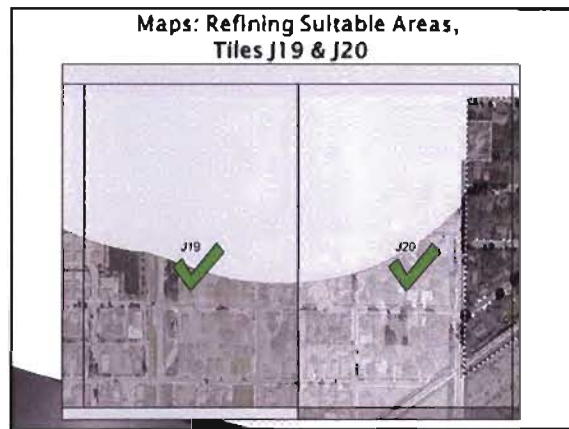
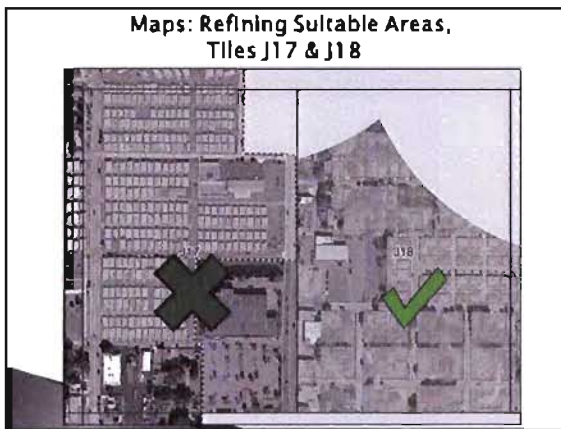
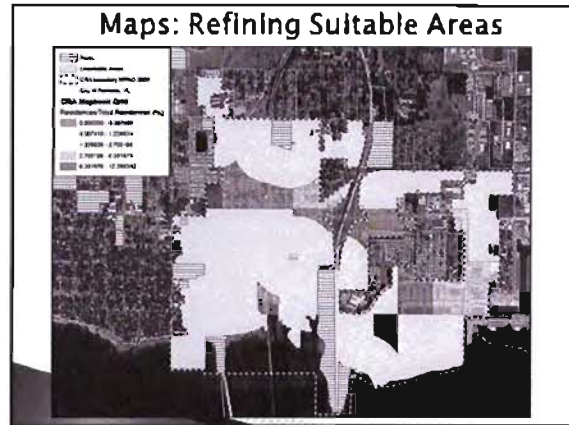
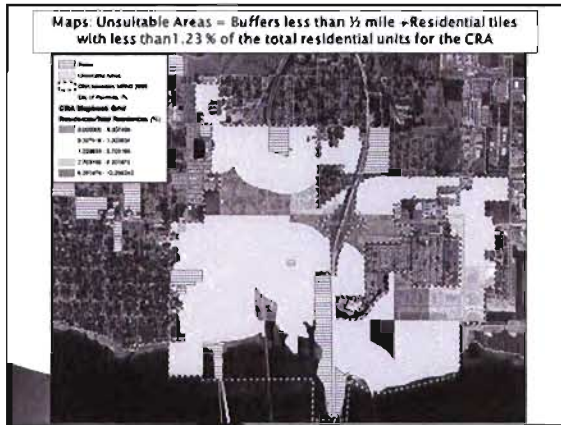
- › Use GIS to show all the current parks within Palmetto
- › Create a multiple ring buffer around each park at the distances of .1, .2, and .5 miles.
- › Overlay CRA Mapbook grid
- › Determine parcels assigned residential zoning classifications within CRA grid
- › Count all the livable spaces within each residential parcel
- › Create a percentage by dividing each grid's residential space count by the total count throughout the CRA and color code the mapbook grid.
- › Layer the multi-ring park buffer over the color coded grid.
- › The regions where high density of livable spaces are overlapped by the outer ring (0.5 miles) of the park buffer indicate areas which should be considered for the new park.
- › Research available parcels within the viable regions to determine one or more parcels which fit the city's needs.
- › Choose a parcel(s) based on criteria which has been determined to best suit the needs of the city and the neighborhood while conforming to current CRA guidelines.

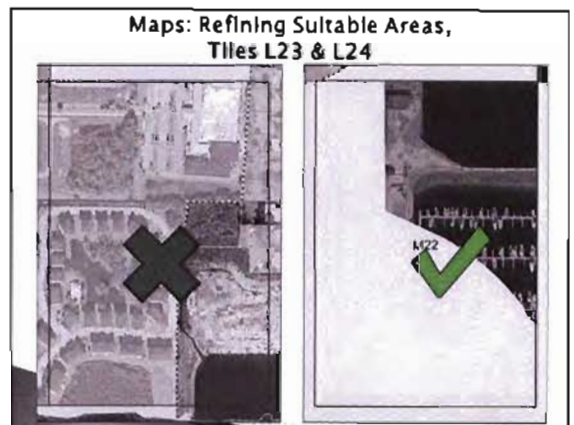
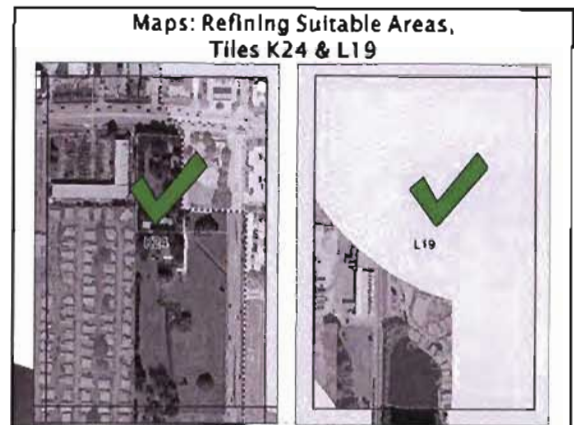
Maps: Park Buffers fit to city limits



Maps: the CRA & Map book Grid







**Summation**

- › Map Book Tiles J18, J19, J20, K20 (Parcels 2580010409, 2580010509 & 2773100009), K24 (Parcels 2580010409 & 2580010509), L19 (Parcel 2773100009) & M22 (Parcel 2581600379) merit further review
- › Full Parcel listing and additional parcel information available upon request

**Conclusions**

- › Primary consideration should be given to parcels with condemned or vacant domiciles or structures otherwise determined to be in need of renewal
- › Tax roll comparisons may aid in parcel determination & selection
- › Annexation of parcels into the CRA may be required



Thank you for your time.  
Questions?

Community Redevelopment Agency  
GIS Staff  
City of Palmetto, FL

The images, maps and analysis were developed by the GIS staff at the Palmetto CRA. They are provided for general reference and are not warranted in any way. Errors from non-coincidence of features from different sources may exist. The city of Palmetto, FL, the CRA and its employees shall be held harmless for any inappropriate or unintended use of this information.  
2/2/2010

## HP Large Scale Printer Pricing

Both quotes are for refurbished DesignJet Z6100 60-in. printers

The difference between the quotes is the Maintenance Plan. The first quote is a 5 year maintenance plan & the 2nd quote is the 3 year maintenance plan.

Media Bins are entirely optional. These are temporary and nonbinding quotes from HP Small Business Department.

Description	Quantity	Unit price	Discount	Sales price
HP Designjet Z6100 60-in printer - Refurbished Q6652CR#B1K ORIGINAL PRICE: \$15,995 PN: Q6652CR#B1Kd Q6652CR#B1K ORIGINAL PRICE: \$15,995 HP Designjet Z6100 60 in printer HP Designjet Z6100 60-in Printer, spindle, printheads (4 x 2 colors each), introductory ink cartridges (x8), maintenance cartridge, Original HP media sample roll, stand (60 in), take-up reel (60 in) Maintenance kit, 3 inch spindle adaptor kit, quick reference guide, setup poster, startup DVD, customer service guide, power cord Yes 60 inches 1134 ft <sup>2</sup> /hr (General), 55 D prints per hour (on US D Plain media), 98 ft <sup>2</sup> /hr (on Glossy media), 720 ft <sup>2</sup> /hr (on Coated media) Up to 2400 x 1200 optimized dpi from 1200 x 1200 input dpi and Optimization For Photo Paper selected and HP Premium Instant-dry Gloss Photo Paper  plus/minus 0.1 24 to 60 in rolls Roll feed, automatic cutter, take-up reel HP-GL/2, HP-RTL, TIFF, JPEG, CALS G4 256 MB/512 MB Illuminated, graphical LCD display area; 8 front-panel buttons (Back, Cancel, Down arrow, Form Feed and Cut, Power, Reset, Select, Up arrow); 2 LEDs (Power, Status); On/Off buzzer 1 EIO slot, Gigabit Ethernet Yes, standard Microsoft® Windows® 2000; Windows® XP Home; Windows® XP Professional; Windows® Server 2003; Windows® Vista(TM) Ready; Mac OS X v 10.2.8; Mac OS 10.3; Mac OS X v 10.4  Roll feed 2 GHz One-year limited hardware warranty; 8-hour, 5 days a week phone support	1	\$7,737.85	\$0.00	\$7,737.85
HP 5-year Next-Business-Day onsite Designjet Z6100-60 hardware support	1	\$4,879.00	\$0.00	\$4,879.00
HP 91 775-ml Pigment Matte Black Ink Cartridge	1	\$293.00	\$29.30	\$263.70
HP 91 775-ml Pigment Photo Black Ink Cartridge	1	\$293.00	\$29.30	\$263.70
HP 91 775-ml Pigment Light Gray Ink Cartridge	1	\$293.00	\$29.30	\$263.70
HP 91 775-ml Pigment Cyan Ink Cartridge	1	\$293.00	\$29.30	\$263.70
HP 91 775-ml Pigment Magenta Ink Cartridge	1	\$293.00	\$29.30	\$263.70
HP 91 775-ml Pigment Yellow Ink Cartridge	1	\$293.00	\$29.30	\$263.70
HP 91 775-ml Pigment Light Cyan Ink Cartridge	1	\$293.00	\$29.30	\$263.70
HP 91 775-ml Pigment Light Magenta Ink Cartridge	1	\$293.00	\$29.30	\$263.70
HP 91 Matte Black and Cyan Printhead	1	\$156.00	\$15.60	\$140.40
HP 91 Magenta and Yellow Printhead	1	\$156.00	\$15.60	\$140.40
HP 91 Light Magenta and Light Cyan Printhead	1	\$156.00	\$15.60	\$140.40
HP 91 Photo Black and Light Gray Printhead	1	\$156.00	\$15.60	\$140.40
HP Designjet Z6100 60-inch Media Bin	1	\$425.00	\$42.50	\$382.50
<b>Subtotal:</b>				\$15,670.55
<sup>1</sup> (Estimated) Tax:				\$1,023.67
(FSP) Shipping and handling:				\$289.20
<b>Grand total:</b>				\$16,983.42
<sup>2</sup> Business lease cost:				\$424.58

Description	Quantity	Unit price	Discount	Sales price
HP Designjet Z6100ps 60-in printer - Refurbished ORIGINAL PRICE: \$18,995 PN: Q6654CR#B1Kd ORIGINAL PRICE: \$18,995 HP Designjet Z6100ps 60-in printer (Refurbished) HP Designjet Z6100ps 60-in Printer, spindle, printheads (4 x 2 colors each), introductory ink cartridges (x8), maintenance cartridge, Original HP media sample roll, stand (60 in), take-up reel (60 in) Maintenance kit, 3 inch spindle adaptor kit, quick reference guide, setup poster, startup DVD, customer service guide, power cord Yes 60 inches 1134 ft <sup>2</sup> /hr (General), 55 D prints per hour (on US D Plain media), 98 ft <sup>2</sup> /hr (on Glossy media), 720 ft <sup>2</sup> /hr (on Coated media) Up to 2400 x 1200 optimized dpi from 1200 x 1200 input dpi and Optimization For Photo Paper selected and HP Premium Instant-dry Gloss Photo Paper plus/minus 0.1 24 to 60 in rolls Roll feed, automatic cutter, take-up reel Adobe® PostScript® Level 3, Adobe® PDF 1.6, HP-GL/2, HP-RTL, TIFF, JPEG, CALS G4 256 MB/512 MB Illuminated, graphical LCD display area; 8 front-panel buttons (Back, Cancel, Down arrow, Form Feed and Cut, Power, Reset, Select, Up arrow); 2 LEDs (Power, Status); On/Off buzzer 1 EIO slot, Gigabit Ethernet Yes, standard Microsoft® Windows® 2000; Windows® XP Home; Windows® XP Professional; Windows® Server 2003; Windows® Vista(TM) Ready; Mac OS X v 10.2.8; Mac OS 10.3; Mac OS X v 10.4  Roll feed 2 GHz One-year limited hardware warranty; 8-hour, 5 days a week phone support	1	\$9,188.67	\$0.00	\$9,188.67

HP 3-year Next-Business-Day onsite Designjet Z6100-60 hardware support	1	\$2,600.00	\$0.00	\$2,600.00
HP 91 775-ml Pigment Matte Black Ink Cartridge	1	\$293.00	\$29.30	\$263.70
HP 91 775-ml Pigment Photo Black Ink Cartridge	1	\$293.00	\$29.30	\$263.70
HP 91 775-ml Pigment Light Gray Ink Cartridge	1	\$293.00	\$29.30	\$263.70
HP 91 775-ml Pigment Cyan Ink Cartridge	1	\$293.00	\$29.30	\$263.70
HP 91 775-ml Pigment Magenta Ink Cartridge	1	\$293.00	\$29.30	\$263.70
HP 91 775-ml Pigment Yellow Ink Cartridge	1	\$293.00	\$29.30	\$263.70
HP 91 775-ml Pigment Light Cyan Ink Cartridge	1	\$293.00	\$29.30	\$263.70
HP 91 775-ml Pigment Light Magenta Ink Cartridge	1	\$293.00	\$29.30	\$263.70
HP 91 Matte Black and Cyan Printhead	1	\$156.00	\$15.60	\$140.40
HP 91 Magenta and Yellow Printhead	1	\$156.00	\$15.60	\$140.40
HP 91 Light Magenta and Light Cyan Printhead	1	\$156.00	\$15.60	\$140.40
HP 91 Photo Black and Light Gray Printhead	1	\$156.00	\$15.60	\$140.40
HP 91 Maintenance Cartridge	1	\$80.50	\$8.05	\$72.45
HP Designjet Z6100 60-inch Media Bin	1	\$425.00	\$42.50	\$382.50

Subtotal:	\$14,914.82
<sup>1</sup> (Estimated) Tax:	\$967.36
(FSP) Shipping and handling:	\$290.40
Grand total:	\$16,172.58
<sup>2</sup> Business lease cost:	\$404.75