

TAB

B

My responsibilities as an Intern for the Palmetto Community Redevelopment Agency (CRA) include transferring audio tapes to digital audio files, address matching, and Park Inventories. I also assisted in any other tasks when necessary, like surveys or other day to day operations. As the Intern for the CRA I learned the importance of community relations in understanding the needs and wants of the citizens of the City of Palmetto.

My first responsibility is transferring audio tapes to digital audio files. I used Windows Movie Maker to record the sounds being played through the computers sound input port, and then editing the files to make a single tape or multiple tapes one file organized by date (mm/dd/yyyy). This is important to ensure the ease of review and record keeping of all the Minutes for the CRA Board to ensure that the community can access these files with ease at any given time.

My second responsibility as an Intern was to standardize addresses that were received from the Palmetto Police Department representing various types of Crimes. The purpose for standardizing the addresses is to make the addresses readable by GIS Programs. This allows the city to make the addresses universal for multiple purposes. Using this data we can then accurately calculate general hot spot areas of crime, as well as crime specific hot spots. This helps the Palmetto Police Department in assigning units throughout the City of Palmetto, while increasing the amount of effective community policing and making the city safer for everyone.

My third responsibility is working in Geographic information System (GIS). I used a Garmin GPS unit (eTrex Vista H) to take inventories of the parks within the CRA. This was done to have a record of all the assets within each park and their location down to about a three meter radius or better. I start with the GPS unit and I will walk an entire park recording the coordinates of each item with the GPS unit. Then I can export those coordinates into an Excel table. Editing and exporting the data make it readable across multiple GIS platforms such as ArcMap or Google Earth. This allows for City employees to have an accurate and up to date inventory for their parks when it comes time to updating or overhauling a park. It also allows the city to make maps of parks for citizens who want information about a park and all its amenities, vegetation, and or utilities.

During my employment as an intern for the Palmetto CRA I have had many opportunities to learn skills viable to success in the world of business, technology and government. I have learned the skills necessary to understand and use GIS to create an Inventory of the parks in the CRA District, and placing them on maps that can be read through many mapping programs; This also allows the creation of maps that can be viewed and understand by anyone. I have also learned the importance of having multiple sets of data in order to ensure accuracy and reliability in your work. Everything that I have experienced will help me better understand the day to day operations of government which will help both myself and the City of Palmetto.

Jenith Silverio

From: CRAGuest
Sent: Friday, August 20, 2010 8:58 AM
To: Jeff Burton; Zachary Schwartz
Subject: Internship Presentation
Attachments: Internship Right-Up.docx; GIS Presentation.pptx

~~~~~

Devin Bloome

Intern  
Community Redevelopment Agency (CRA)  
Palmetto, FL  
Phone: (941) 723-4988  
Email: [craguest@palmettofl.org](mailto:craguest@palmettofl.org)

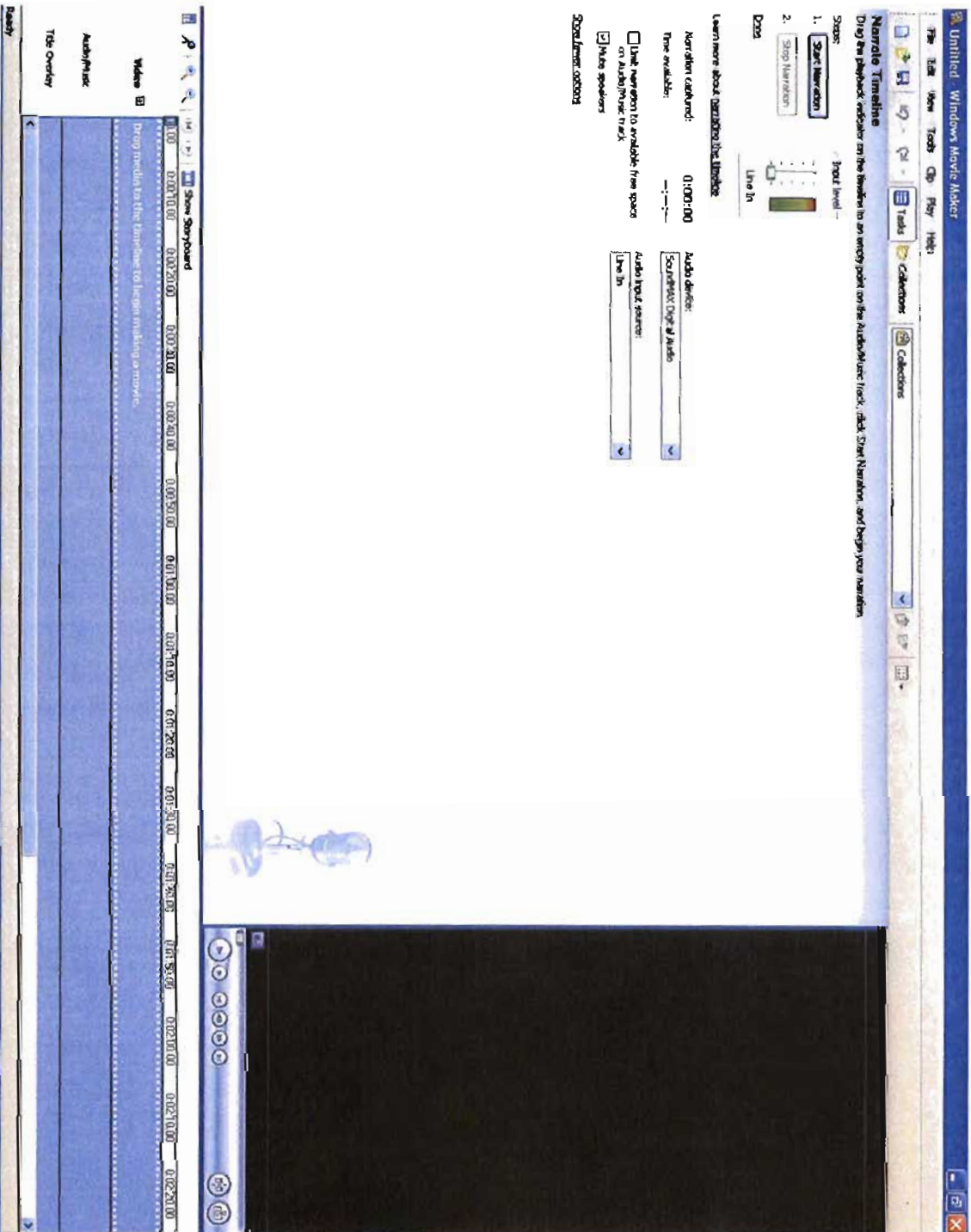


Please note: Florida has a very broad public records law. Most written communications to or from government officials regarding government business are public records available to the public and media upon request. Your e-mail communications may therefore be subject to public disclosure.

# Internship Presentation

Devin Bloome

# Audio File Conversions





FileHomeInsertPage LayoutFormulasDataReviewView

PrintPrint RangePrint SelectionPrint AllPrint CommentsPrint FormulasPrint All

Print RangePrint SelectionPrint AllPrint CommentsPrint FormulasPrint All

Print RangePrint SelectionPrint AllPrint CommentsPrint FormulasPrint All

Print RangePrint SelectionPrint AllPrint CommentsPrint FormulasPrint All

Print RangePrint SelectionPrint AllPrint CommentsPrint FormulasPrint All

Print RangePrint SelectionPrint AllPrint CommentsPrint FormulasPrint All

Print RangePrint SelectionPrint AllPrint CommentsPrint FormulasPrint All

Print RangePrint SelectionPrint AllPrint CommentsPrint FormulasPrint All

Print RangePrint SelectionPrint AllPrint CommentsPrint FormulasPrint All

Print RangePrint SelectionPrint AllPrint CommentsPrint FormulasPrint All

Print RangePrint SelectionPrint AllPrint CommentsPrint FormulasPrint All

Print RangePrint SelectionPrint AllPrint CommentsPrint FormulasPrint All

Print RangePrint SelectionPrint AllPrint CommentsPrint FormulasPrint All

Print RangePrint SelectionPrint AllPrint CommentsPrint FormulasPrint All

Print RangePrint SelectionPrint AllPrint CommentsPrint FormulasPrint All

Print RangePrint SelectionPrint AllPrint CommentsPrint FormulasPrint All

Print RangePrint SelectionPrint AllPrint CommentsPrint FormulasPrint All

Print RangePrint SelectionPrint AllPrint CommentsPrint FormulasPrint All

Print RangePrint SelectionPrint AllPrint CommentsPrint FormulasPrint All

Print RangePrint SelectionPrint AllPrint CommentsPrint FormulasPrint All

Print RangePrint SelectionPrint AllPrint CommentsPrint FormulasPrint All

Print RangePrint SelectionPrint AllPrint CommentsPrint FormulasPrint All

Print RangePrint SelectionPrint AllPrint CommentsPrint FormulasPrint All

Print RangePrint SelectionPrint AllPrint CommentsPrint FormulasPrint All

Print RangePrint SelectionPrint AllPrint CommentsPrint FormulasPrint All

Print RangePrint SelectionPrint AllPrint CommentsPrint FormulasPrint All

Print RangePrint SelectionPrint AllPrint CommentsPrint FormulasPrint All

Print RangePrint SelectionPrint AllPrint CommentsPrint FormulasPrint All

Print RangePrint SelectionPrint AllPrint CommentsPrint FormulasPrint All

Print RangePrint SelectionPrint AllPrint CommentsPrint FormulasPrint All

Print RangePrint SelectionPrint AllPrint CommentsPrint FormulasPrint All

Print RangePrint SelectionPrint AllPrint CommentsPrint FormulasPrint All

Print RangePrint SelectionPrint AllPrint CommentsPrint FormulasPrint All

Print RangePrint SelectionPrint AllPrint CommentsPrint FormulasPrint All

Print RangePrint SelectionPrint AllPrint CommentsPrint FormulasPrint All

Print RangePrint SelectionPrint AllPrint CommentsPrint FormulasPrint All

Print RangePrint SelectionPrint AllPrint CommentsPrint FormulasPrint All

Print RangePrint SelectionPrint AllPrint CommentsPrint FormulasPrint All

Print RangePrint SelectionPrint AllPrint CommentsPrint FormulasPrint All

Print RangePrint SelectionPrint AllPrint CommentsPrint FormulasPrint All

Print RangePrint SelectionPrint AllPrint CommentsPrint FormulasPrint All

Print RangePrint SelectionPrint AllPrint CommentsPrint FormulasPrint All

Print RangePrint SelectionPrint AllPrint CommentsPrint FormulasPrint All

Print RangePrint SelectionPrint AllPrint CommentsPrint FormulasPrint All

Print RangePrint SelectionPrint AllPrint CommentsPrint FormulasPrint All

Print RangePrint SelectionPrint AllPrint CommentsPrint FormulasPrint All

Print RangePrint SelectionPrint AllPrint CommentsPrint FormulasPrint All

Print RangePrint SelectionPrint AllPrint CommentsPrint FormulasPrint All

Print RangePrint SelectionPrint AllPrint CommentsPrint FormulasPrint All

Print RangePrint SelectionPrint AllPrint CommentsPrint FormulasPrint All

Print RangePrint SelectionPrint AllPrint CommentsPrint FormulasPrint All

Print RangePrint SelectionPrint AllPrint CommentsPrint FormulasPrint All

Print RangePrint SelectionPrint AllPrint CommentsPrint FormulasPrint All

Print RangePrint SelectionPrint AllPrint CommentsPrint FormulasPrint All

Print RangePrint SelectionPrint AllPrint CommentsPrint FormulasPrint All

Print RangePrint SelectionPrint AllPrint CommentsPrint FormulasPrint All

Print RangePrint SelectionPrint AllPrint CommentsPrint FormulasPrint All

Print RangePrint SelectionPrint AllPrint CommentsPrint FormulasPrint All

Print RangePrint SelectionPrint AllPrint CommentsPrint FormulasPrint All

Print RangePrint SelectionPrint AllPrint CommentsPrint FormulasPrint All

Print RangePrint SelectionPrint AllPrint CommentsPrint FormulasPrint All

Print RangePrint SelectionPrint AllPrint CommentsPrint FormulasPrint All

Print RangePrint SelectionPrint AllPrint CommentsPrint FormulasPrint All

Print RangePrint SelectionPrint AllPrint CommentsPrint FormulasPrint All

Print RangePrint SelectionPrint AllPrint CommentsPrint FormulasPrint All

Print RangePrint SelectionPrint AllPrint CommentsPrint FormulasPrint All

Print RangePrint SelectionPrint AllPrint CommentsPrint FormulasPrint All

Print RangePrint SelectionPrint AllPrint CommentsPrint FormulasPrint All

Print RangePrint SelectionPrint AllPrint CommentsPrint FormulasPrint All

Print RangePrint SelectionPrint AllPrint CommentsPrint FormulasPrint All

Print RangePrint SelectionPrint AllPrint CommentsPrint FormulasPrint All

Print RangePrint SelectionPrint AllPrint CommentsPrint FormulasPrint All

Print RangePrint SelectionPrint AllPrint CommentsPrint FormulasPrint All

Print RangePrint SelectionPrint AllPrint CommentsPrint FormulasPrint All

Print RangePrint SelectionPrint AllPrint CommentsPrint FormulasPrint All

Print RangePrint SelectionPrint AllPrint CommentsPrint FormulasPrint All

Print RangePrint SelectionPrint AllPrint CommentsPrint FormulasPrint All

Print RangePrint SelectionPrint AllPrint CommentsPrint FormulasPrint All

Print RangePrint SelectionPrint AllPrint CommentsPrint FormulasPrint All

Print RangePrint SelectionPrint AllPrint CommentsPrint FormulasPrint All

Print RangePrint SelectionPrint AllPrint CommentsPrint FormulasPrint All

Print RangePrint SelectionPrint AllPrint CommentsPrint FormulasPrint All

Print RangePrint SelectionPrint AllPrint CommentsPrint FormulasPrint All

Print RangePrint SelectionPrint AllPrint CommentsPrint FormulasPrint All

Print RangePrint SelectionPrint AllPrint CommentsPrint FormulasPrint All

Print RangePrint SelectionPrint AllPrint CommentsPrint FormulasPrint All

Print RangePrint SelectionPrint AllPrint CommentsPrint FormulasPrint All

Print RangePrint SelectionPrint AllPrint CommentsPrint FormulasPrint All

Print RangePrint SelectionPrint AllPrint CommentsPrint FormulasPrint All

Print RangePrint SelectionPrint AllPrint CommentsPrint FormulasPrint All

Print RangePrint SelectionPrint AllPrint CommentsPrint FormulasPrint All

Print RangePrint SelectionPrint AllPrint CommentsPrint FormulasPrint All

Print RangePrint SelectionPrint AllPrint CommentsPrint FormulasPrint All

Print RangePrint SelectionPrint AllPrint CommentsPrint FormulasPrint All

Print RangePrint SelectionPrint AllPrint CommentsPrint FormulasPrint All

Print RangePrint SelectionPrint AllPrint CommentsPrint FormulasPrint All

Print RangePrint SelectionPrint AllPrint CommentsPrint FormulasPrint All

Print RangePrint SelectionPrint AllPrint CommentsPrint FormulasPrint All

Print RangePrint SelectionPrint AllPrint CommentsPrint FormulasPrint All

Print RangePrint SelectionPrint AllPrint CommentsPrint FormulasPrint All

Print RangePrint SelectionPrint AllPrint CommentsPrint FormulasPrint All

Print RangePrint SelectionPrint AllPrint CommentsPrint FormulasPrint All

Print RangePrint SelectionPrint AllPrint CommentsPrint FormulasPrint All

Print RangePrint SelectionPrint AllPrint CommentsPrint FormulasPrint All

Print RangePrint SelectionPrint AllPrint CommentsPrint FormulasPrint All

Print RangePrint SelectionPrint AllPrint CommentsPrint FormulasPrint All

Print RangePrint SelectionPrint AllPrint CommentsPrint FormulasPrint All

Print RangePrint SelectionPrint AllPrint CommentsPrint FormulasPrint All

Print RangePrint SelectionPrint AllPrint CommentsPrint FormulasPrint All

Print RangePrint SelectionPrint AllPrint CommentsPrint FormulasPrint All

Print RangePrint SelectionPrint AllPrint CommentsPrint FormulasPrint All

Print RangePrint SelectionPrint AllPrint CommentsPrint FormulasPrint All

Print RangePrint SelectionPrint AllPrint CommentsPrint FormulasPrint All

Print RangePrint SelectionPrint AllPrint CommentsPrint FormulasPrint All

Print RangePrint SelectionPrint AllPrint CommentsPrint FormulasPrint All

Print RangePrint SelectionPrint AllPrint CommentsPrint FormulasPrint All

Print RangePrint SelectionPrint AllPrint CommentsPrint FormulasPrint All

Print RangePrint SelectionPrint AllPrint CommentsPrint FormulasPrint All

Print RangePrint SelectionPrint AllPrint CommentsPrint FormulasPrint All

Print RangePrint SelectionPrint AllPrint CommentsPrint FormulasPrint All

Print RangePrint SelectionPrint AllPrint CommentsPrint FormulasPrint All

Print RangePrint SelectionPrint AllPrint CommentsPrint FormulasPrint All

Print RangePrint SelectionPrint AllPrint CommentsPrint FormulasPrint All

Print RangePrint SelectionPrint AllPrint CommentsPrint FormulasPrint All

Print RangePrint SelectionPrint AllPrint CommentsPrint FormulasPrint All

Print RangePrint SelectionPrint AllPrint CommentsPrint FormulasPrint All

Print RangePrint SelectionPrint AllPrint CommentsPrint FormulasPrint All

Print RangePrint SelectionPrint AllPrint CommentsPrint FormulasPrint All

Print RangePrint SelectionPrint AllPrint CommentsPrint FormulasPrint All

Print RangePrint SelectionPrint AllPrint CommentsPrint FormulasPrint All

Print RangePrint SelectionPrint AllPrint CommentsPrint FormulasPrint All

Print RangePrint SelectionPrint AllPrint CommentsPrint FormulasPrint All

Print RangePrint SelectionPrint AllPrint CommentsPrint FormulasPrint All

Print RangePrint SelectionPrint AllPrint CommentsPrint FormulasPrint All

Print RangePrint SelectionPrint AllPrint CommentsPrint FormulasPrint All

Print RangePrint SelectionPrint AllPrint CommentsPrint FormulasPrint All

Print RangePrint SelectionPrint AllPrint CommentsPrint FormulasPrint All

Print RangePrint SelectionPrint AllPrint CommentsPrint FormulasPrint All

Print RangePrint SelectionPrint AllPrint CommentsPrint FormulasPrint All

Print RangePrint SelectionPrint AllPrint CommentsPrint FormulasPrint All

Print RangePrint SelectionPrint AllPrint CommentsPrint FormulasPrint All

Print RangePrint SelectionPrint AllPrint CommentsPrint FormulasPrint All

Print RangePrint SelectionPrint AllPrint CommentsPrint FormulasPrint All

Print RangePrint SelectionPrint AllPrint CommentsPrint FormulasPrint All

Print RangePrint SelectionPrint AllPrint CommentsPrint FormulasPrint All

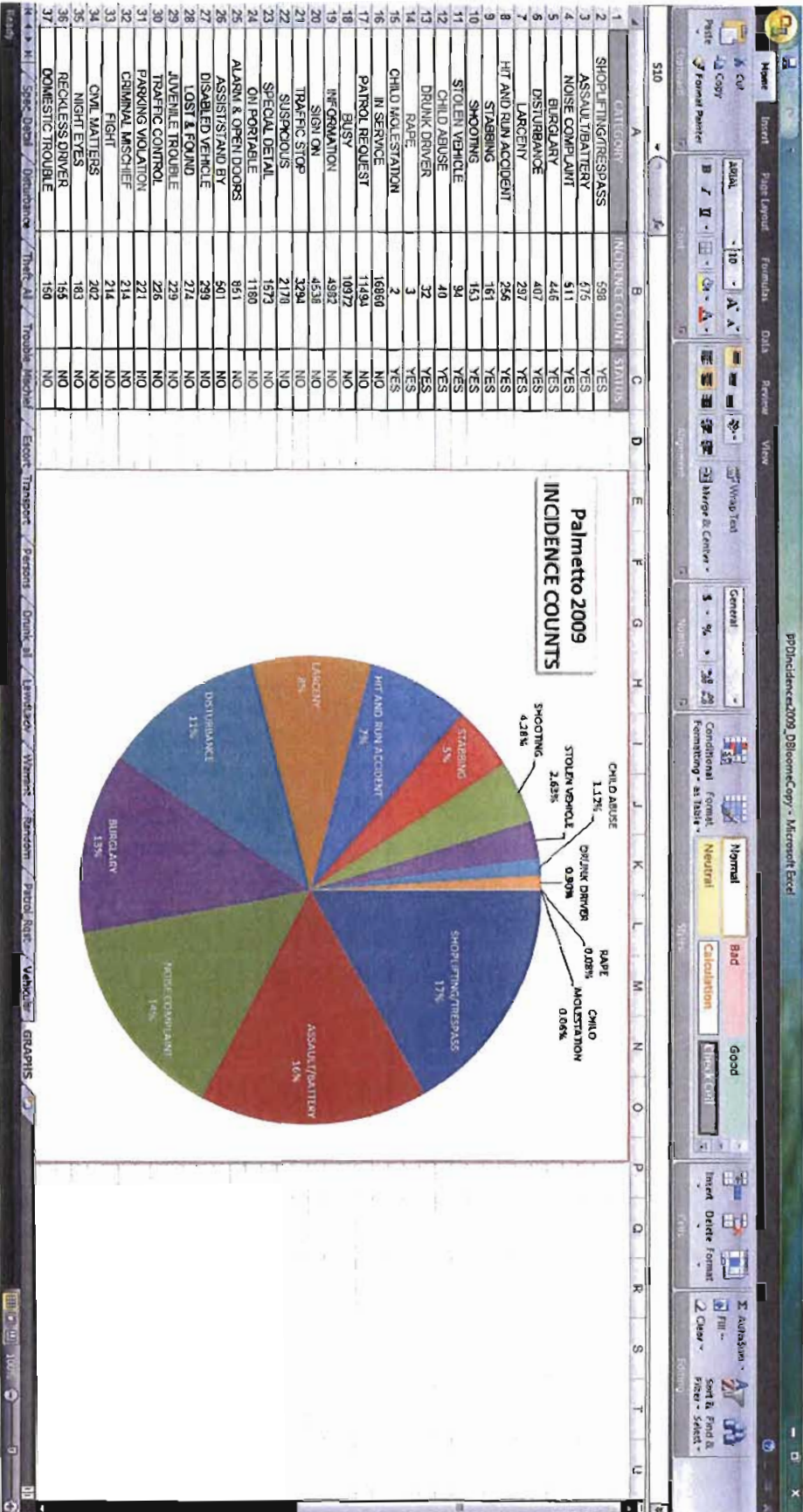
Print RangePrint SelectionPrint AllPrint CommentsPrint FormulasPrint All

Print RangePrint SelectionPrint AllPrint CommentsPrint FormulasPrint All

Print RangePrint SelectionPrint

# Address Matching

(Continued)

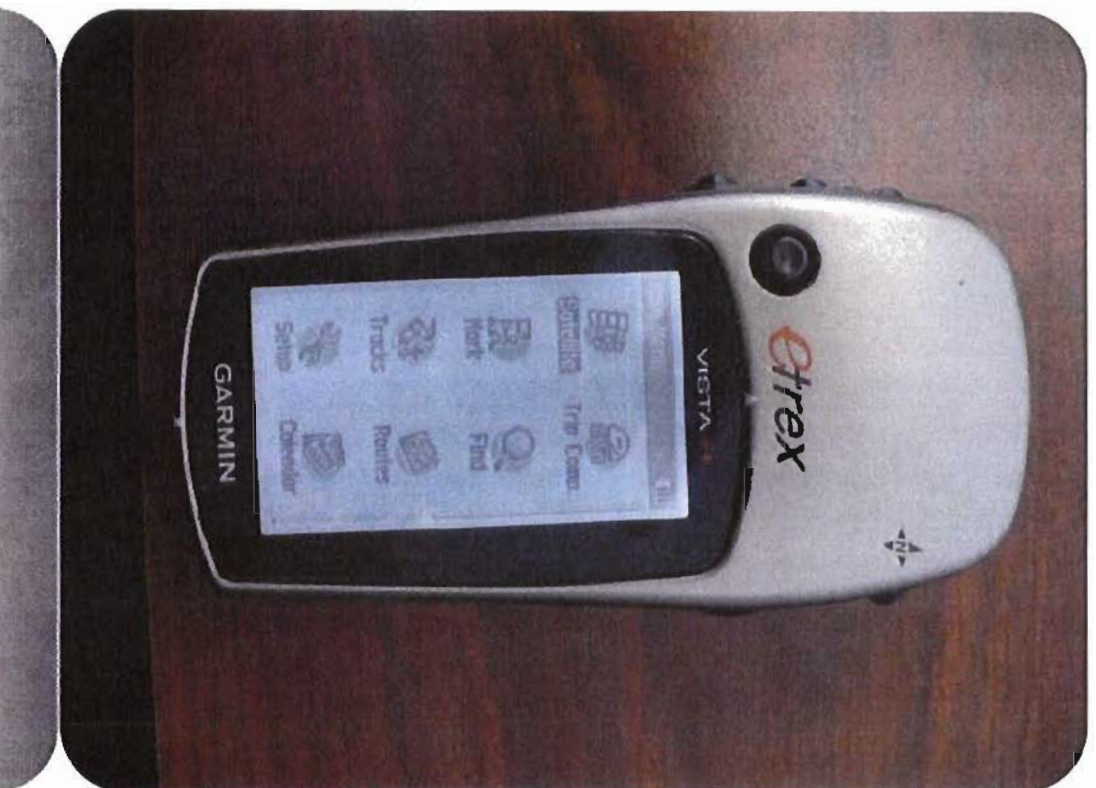


# G.I.S.

*Geographic Information System*



# Garmin eTrex Vista H



## DNR Garmin

File Edit GPS Waypoint Track Route Real Time Help

MN DNR - Garmin

oTrex Vrtla H Software Version 2.10 VERBMAP Americas Rec Basemap 4.00  
 Lat 27.5075960E Lon -82.56265576  
 Alt EPE

<<< Data Table >>>

| Type | Ident        | Lat         | Long         | U Proj           | X Proj           | Comment              | Display | Symbol | unused1 | dst | prox_index |
|------|--------------|-------------|--------------|------------------|------------------|----------------------|---------|--------|---------|-----|------------|
| 1    | WAYPOINT B01 | 27.51632212 | -82.56352630 | 13044598.359018  | 345578.146211625 | 12-AUG-10 10:25:32AM | 0       | 8287   | 0       | 0   | 1          |
| 2    | WAYPOINT B02 | 27.51590109 | -82.56346394 | 13044551.6349314 | 345583.717976157 | 12-AUG-10 10:27:33AM | 0       | 8287   | 0       | 0   | 1          |
| 3    | WAYPOINT B03 | 27.51535711 | -82.56360500 | 13044491.611599  | 345563.541685313 | 12-AUG-10 10:28:17AM | 0       | 8287   | 0       | 0   | 1          |
| 4    | WAYPOINT B04 | 27.51510004 | -82.56355262 | 13044462.9961283 | 345573.838930113 | 12-AUG-10 10:30:29AM | 0       | 8287   | 0       | 0   | 1          |
| 5    | WAYPOINT B05 | 27.51469854 | -82.56360074 | 13044418.4488549 | 345578.402739228 | 12-AUG-10 10:31:25AM | 0       | 8287   | 0       | 0   | 1          |
| 6    | WAYPOINT PV1 | 27.51694230 | -82.56369419 | 13044656.1995247 | 345562.283003321 | 12-AUG-10 10:24:00AM | 0       | 8287   | 0       | 0   | 1          |
| 7    | WAYPOINT PV2 | 27.51433671 | -82.56381917 | 13044385.4054329 | 345546.526241168 | 12-AUG-10 10:33:15AM | 0       | 8287   | 0       | 0   | 1          |
| 8    | WAYPOINT R01 | 27.50727301 | -82.56258083 | 13043594.6209215 | 345568.906728814 | 12-AUG-10 10:43:36AM | 0       | 8287   | 0       | 0   | 1          |
| 9    | WAYPOINT T81 | 27.51684196 | -82.56369428 | 13044656.1619678 | 345562.273644141 | 12-AUG-10 10:23:49AM | 0       | 8287   | 0       | 0   | 1          |
| 10   | WAYPOINT T82 | 27.51439705 | -82.56381825 | 13044385.4419557 | 345546.61759477  | 12-AUG-10 10:33:31AM | 0       | 8287   | 0       | 0   | 1          |
| 11   | WAYPOINT T83 | 27.50743998 | -82.56260572 | 13043813.1506773 | 345565.679984861 | 12-AUG-10 10:44:49AM | 0       | 8287   | 0       | 0   | 1          |
| 12   | WAYPOINT T84 | 27.50759681 | -82.56260354 | 13043630.5233201 | 345567.114280191 | 12-AUG-10 10:45:37AM | 0       | 8287   | 0       | 0   | 1          |
| 13   | WAYPOINT TC1 | 27.51678899 | -82.56359713 | 13044550.1723715 | 345571.801993861 | 12-AUG-10 10:24:27AM | 0       | 8287   | 0       | 0   | 1          |
| 14   | WAYPOINT TC2 | 27.51587335 | -82.56346436 | 13044548.5621074 | 345583.637634133 | 12-AUG-10 10:27:51AM | 0       | 8287   | 0       | 0   | 1          |
| 15   | WAYPOINT TC3 | 27.51542710 | -82.56363820 | 13044499.3380532 | 345565.842272081 | 12-AUG-10 10:28:53AM | 0       | 8287   | 0       | 0   | 1          |
| 16   | WAYPOINT TC4 | 27.51513164 | -82.56360962 | 13044466.5681323 | 345568.25299768  | 12-AUG-10 10:29:59AM | 0       | 8287   | 0       | 0   | 1          |
| 17   | WAYPOINT TC5 | 27.51465007 | -82.56349848 | 13044413.0693451 | 345578.558185384 | 12-AUG-10 10:31:44AM | 0       | 8287   | 0       | 0   | 1          |
| 18   | WAYPOINT TC6 | 27.50723613 | -82.56261888 | 13043590.5823076 | 345555.095383878 | 12-AUG-10 10:43:58AM | 0       | 8287   | 0       | 0   | 1          |
| 19   | WAYPOINT TC7 | 27.50751617 | -82.56262433 | 13043621.6150086 | 345565.947310382 | 12-AUG-10 10:45:13AM | 0       | 8287   | 0       | 0   | 1          |
| 20   | WAYPOINT TC8 | 27.50764224 | -82.56262466 | 13043635.5828438 | 345555.091294706 | 12-AUG-10 10:45:59AM | 0       | 8287   | 0       | 0   | 1          |

Connected 0 of 21 Selected



|             | A           | B           | C            | D                 | E               | F                    | G        | H | I | J | K |
|-------------|-------------|-------------|--------------|-------------------|-----------------|----------------------|----------|---|---|---|---|
| TYPE        | IDENT       | LAT         | LONG         | Y_PROJ            | X_PROJ          | COMMENT              | ALTITUDE |   |   |   |   |
| 1 WAYPOINT  | Bench       | 27.5162212  | -82.56352630 | 13044598.35901800 | 345578.14621163 | 12-AUG-10 10:23:32AM | 7.00     |   |   |   |   |
| 2 WAYPOINT  | Bench       | 27.51550109 | -82.56346394 | 13044551.63493140 | 345583.71787616 | 12-AUG-10 10:27:33AM | 7.00     |   |   |   |   |
| 3 WAYPOINT  | Bench       | 27.51535711 | -82.56366050 | 13044491.61159900 | 345563.54168531 | 12-AUG-10 10:29:17AM | 7.00     |   |   |   |   |
| 4 WAYPOINT  | Bench       | 27.51510004 | -82.56355262 | 13044462.99612830 | 345573.83893011 | 12-AUG-10 10:30:29AM | 6.00     |   |   |   |   |
| 5 WAYPOINT  | Bench       | 27.51469854 | -82.56350074 | 13044418.44885490 | 345578.40273923 | 12-AUG-10 10:31:25AM | 6.00     |   |   |   |   |
| 6 WAYPOINT  | Pavilion    | 27.51684230 | -82.56369419 | 13044456.19952470 | 345562.28900932 | 12-AUG-10 10:24:00AM | 7.00     |   |   |   |   |
| 7 WAYPOINT  | Pavilion    | 27.51493671 | -82.56381917 | 13044385.40542290 | 345546.52624117 | 12-AUG-10 10:33:15AM | 5.00     |   |   |   |   |
| 8 WAYPOINT  | Pavilion    | 27.50727301 | -82.56258083 | 13043359.62092150 | 345658.90572881 | 12-AUG-10 10:43:36AM | 4.00     |   |   |   |   |
| 9 WAYPOINT  | Boat Ramp   | 27.51684196 | -82.56369428 | 13044456.16196780 | 345562.27964414 | 12-AUG-10 10:23:45AM | 7.00     |   |   |   |   |
| 10 WAYPOINT | Table       | 27.51439705 | -82.56381825 | 13044385.44195570 | 345546.61759477 | 12-AUG-10 10:33:31AM | 5.00     |   |   |   |   |
| 11 WAYPOINT | Table       | 27.50743998 | -82.56260572 | 13043613.15067730 | 345656.67998486 | 12-AUG-10 10:44:49AM | 4.00     |   |   |   |   |
| 12 WAYPOINT | Table       | 27.50759681 | -82.56260354 | 13043630.52332010 | 345657.11426019 | 12-AUG-10 10:45:37AM | 5.00     |   |   |   |   |
| 13 WAYPOINT | Trash Can   | 27.51678899 | -82.56359713 | 13044650.11233150 | 345571.80199386 | 12-AUG-10 10:24:27AM | 6.00     |   |   |   |   |
| 14 WAYPOINT | Trash Can   | 27.51587335 | -82.56346436 | 13044548.56210740 | 345583.63763413 | 12-AUG-10 10:27:51AM | 6.00     |   |   |   |   |
| 15 WAYPOINT | Trash Can   | 27.51542710 | -82.56363820 | 13044499.33809320 | 345655.84227208 | 12-AUG-10 10:28:53AM | 7.00     |   |   |   |   |
| 16 WAYPOINT | Trash Can   | 27.51513154 | -82.56360992 | 13044466.56813230 | 345568.25259977 | 12-AUG-10 10:29:58AM | 6.00     |   |   |   |   |
| 17 WAYPOINT | Trash Can   | 27.51465001 | -82.56349848 | 13044413.06934510 | 345578.55818538 | 12-AUG-10 10:31:44AM | 6.00     |   |   |   |   |
| 18 WAYPOINT | Trash Can   | 27.50723613 | -82.56261888 | 13043590.58236760 | 345655.09538988 | 12-AUG-10 10:43:58AM | 5.00     |   |   |   |   |
| 19 WAYPOINT | Trash Can   | 27.50751617 | -82.56262433 | 13043621.61500860 | 345654.94791038 | 12-AUG-10 10:45:13AM | 5.00     |   |   |   |   |
| 20 WAYPOINT | Trash Can   | 27.50764224 | -82.56262466 | 13043635.58284380 | 345655.09129471 | 12-AUG-10 10:45:59AM | 4.00     |   |   |   |   |
| 21 WAYPOINT | Water Meter | 27.51621106 | -82.56348406 | 13044586.00193360 | 345582.16348585 | 12-AUG-10 10:26:44AM | 7.00     |   |   |   |   |





# Microsoft Office Publisher





# Final Image

