


TAB

A

 **PALMETTO**
Community Redevelopment Agency


715 4th Street West Palmetto, Florida 34221-941-723-4988-www.palmettocra.org

Advisory Board Presentation

August 9th, 2011

Betty Ann Price, Chair
Macarthur Sellars, Vice Chair
Nick Costides
Sia Mollanazar
Charles Smith




 **PALMETTO**
Community Redevelopment Agency

715 4th Street West Palmetto, Florida 34221-941-723-4988-www.palmettocra.org

Public Works/CRA subplans

The Palmetto Public Works Department was asked to submit plans for CRA funding.

	Requested	Recommended
Parks	\$51,812.28	\$50,820.00
Admin/Engineering	\$95,159.00	\$95,159.00



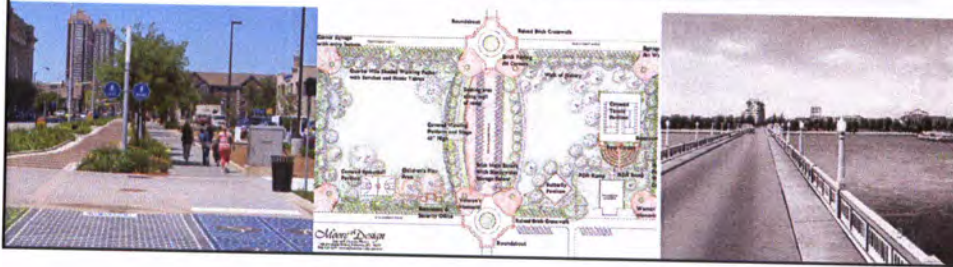


715 4th Street West Palmetto, Florida 34221-941-723-4988-www.palmettocra.org

Public Works/Parks subplans

The CRA has been asked to allocate \$51,812.28 to the City Parks Department.

Project	Requested	Recommended
Historic Park	\$11,440.00	\$11,440.00
Agricultural Museum	\$21,523.00	\$21,523.00
Additional parks & trails costs	\$11,446.24	\$11,446.00 (more info)
Special Events	\$7403.04	\$6,411.00



715 4th Street West Palmetto, Florida 34221-941-723-4988-www.palmettocra.org

Public Works Administration/Engineering

The CRA has been asked to allocate \$95,159.00.

Project	Requested	Recommended
Project manager and inspector	\$82,502.00	\$82,502.00*
Administration	\$12,657.00	\$12,657.00

*The CRA should approve this item for one year, project management needs may diminish depending on CRA cash flow.



715 4th Street West Palmetto, Florida 34221-941-723-4988 www.palmettocra.org

Gateway conceptual

The Palmetto City commission asked that the CRA develop a plan to enhance the CRA gateways into the City of Palmetto.



715 4th Street West Palmetto, Florida 34221-941-723-4988 www.palmettocra.org

LOCATION	SCHEDULE
GREEN BRIDGE	2011-2012
US 41 NORTH	2012-2013
DESOTO BRIDGE	2013-2014
US 301	2014-2015





PALMETTO

Community Redevelopment Agency

715 4th Street West Palmetto, Florida 34221-941-723-4988-www.palmettocra.org

Gateway-Green Bridge

Palmetto Art Center contract
Photo opportunity
12x24 foot poured concrete block
Lighting
Local student participation



PALMETTO

Community Redevelopment Agency

715 4th Street West Palmetto, Florida 34221-941-723-4988-www.palmettocra.org

Gateway-Green Bridge



Conceptual

8



715 4th Street West Palmetto, Florida 34221-941-723-4988-www.palmettocra.org

Gateway-redevelopment

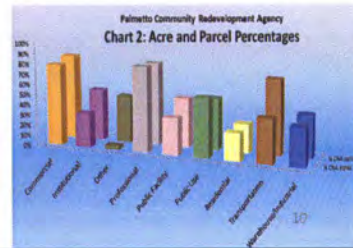
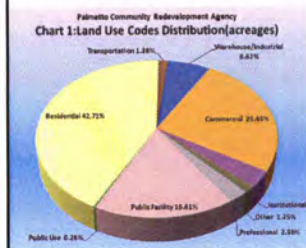
- Removal of existing signage
- Addition of landscaping
- Redevelop parcel with 8th Avenue Streetscape




715 4th Street West Palmetto, Florida 34221-941-723-4988-www.palmettocra.org

CRA plan

The CRA plan outlines the Agency's direction for the next five years.





PALMETTO
Community Redevelopment Agency


715 4th Street West Palmetto, Florida 34221-941-723-4988-www.palmettocra.org

CRA plan - outline

PART ONE: DEFINITIONS
PART TWO: BACKGROUND
PART THREE: EXISTING CONDITIONS
PART FOUR: ANALYSIS

Chart 1: Land Use Codes Distribution (acres)

Chart 2: Acre and Parcel Percentages



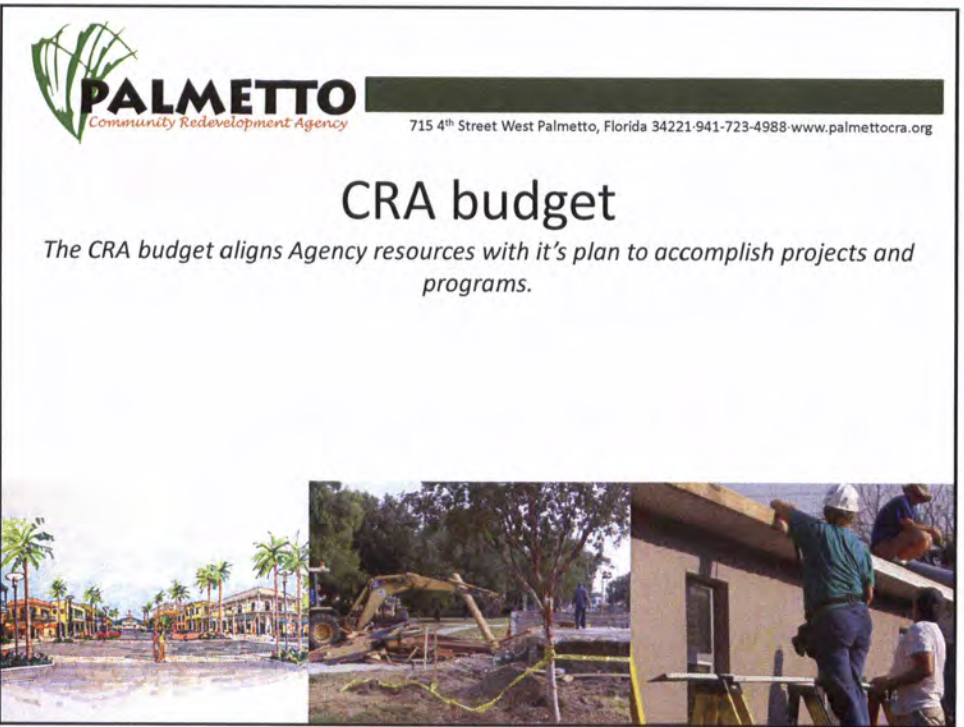
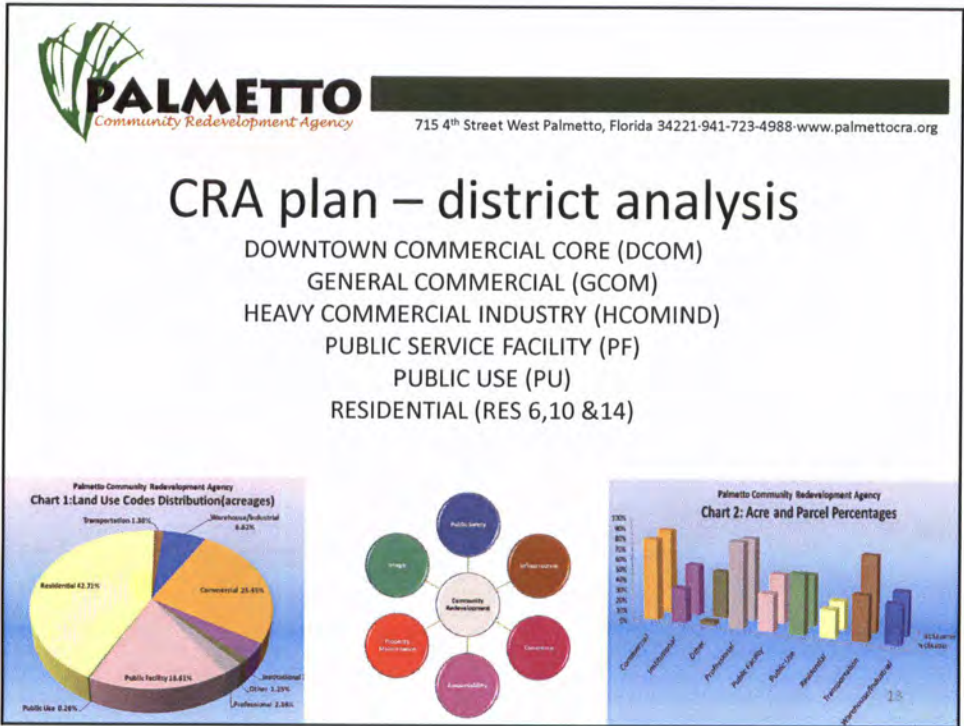
PALMETTO
Community Redevelopment Agency


715 4th Street West Palmetto, Florida 34221-941-723-4988-www.palmettocra.org

CRA GENERAL ANALYSIS	
ACCOUNTABILITY	State and local mandates
PROPERTY MAINTANENCE	Property & Demolition subplans
IMAGE	Image subplan
PUBLIC SAFETY	Community Policing subplan
INFRASTRUCTURE	Infrastructure subplan
COMMERCE	Economic subplan

Chart 1: Land Use Codes Distribution (acres)

Chart 2: Acre and Parcel Percentages






715 4th Street West Palmetto, Florida 34221-941-723-4988-www.palmettocra.org

PROJECT	This Year	2011-12	2012-13	2013-14	2014-15	2015-16
5 th Street	\$610K	\$500K**				
Sutton Park	\$410K	\$250K	\$250K	\$250K	\$250K	\$250K
MLK Park	\$90K	\$100K	\$500K**			
Linear Park Trail (LPT)			\$50K **	\$250K**	\$250K**	\$250K**
10 th Ave - 7 th Street South		\$50K	\$2M ** ***			
CRA Building*		\$50K	\$250K	\$250K		
8 th Ave ROW	\$150K	\$150K	\$150K	\$150K	\$150K	\$150K
Police Depart.		0	0	\$250K		

POLICY
 *In 2014 the CRA office lease will be complete. In order to spur investment in the DCOM, the Agency may wish to build a model at the CBI property to be used as an office and sold. Current annual rent is approximately \$30K.
 ** Projected Grant
 *** Existing Loan

15



715 4th Street West Palmetto, Florida 34221-941-723-4988-www.palmettocra.org

SERVICE	This Year	2011-12	2012-13	2013-14	2014-15	2015-16
Policing Plan	\$780K	**	**	**	**	**
Res. Rehab	\$250K	\$100*	\$100*	\$100*	\$100*	\$100*
Image Plan		**	**	**	**	**
Demo Plan	\$25K	\$10K	**	**	**	**
Code Plan	\$34K	**	**	**	**	**
Area Survey	\$20K		\$20K		20K	
Infr. Plan		**	**	**	**	**
Economic Plan		-	-	-	-	-
1. Storefront		\$50 ***	\$50 ***	\$50 ***	\$50 ***	\$50 ***
2. Incentives						
3. Training		\$10K	\$10K	\$10K	\$10K	\$10K

POLICY
 *Projected Grant
 ** Needs to conform to CRA Plan

16