

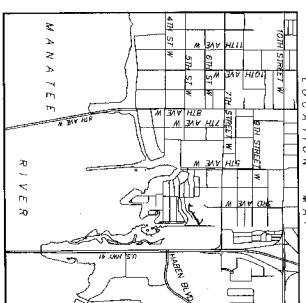
TAB 1

BOULEVARD



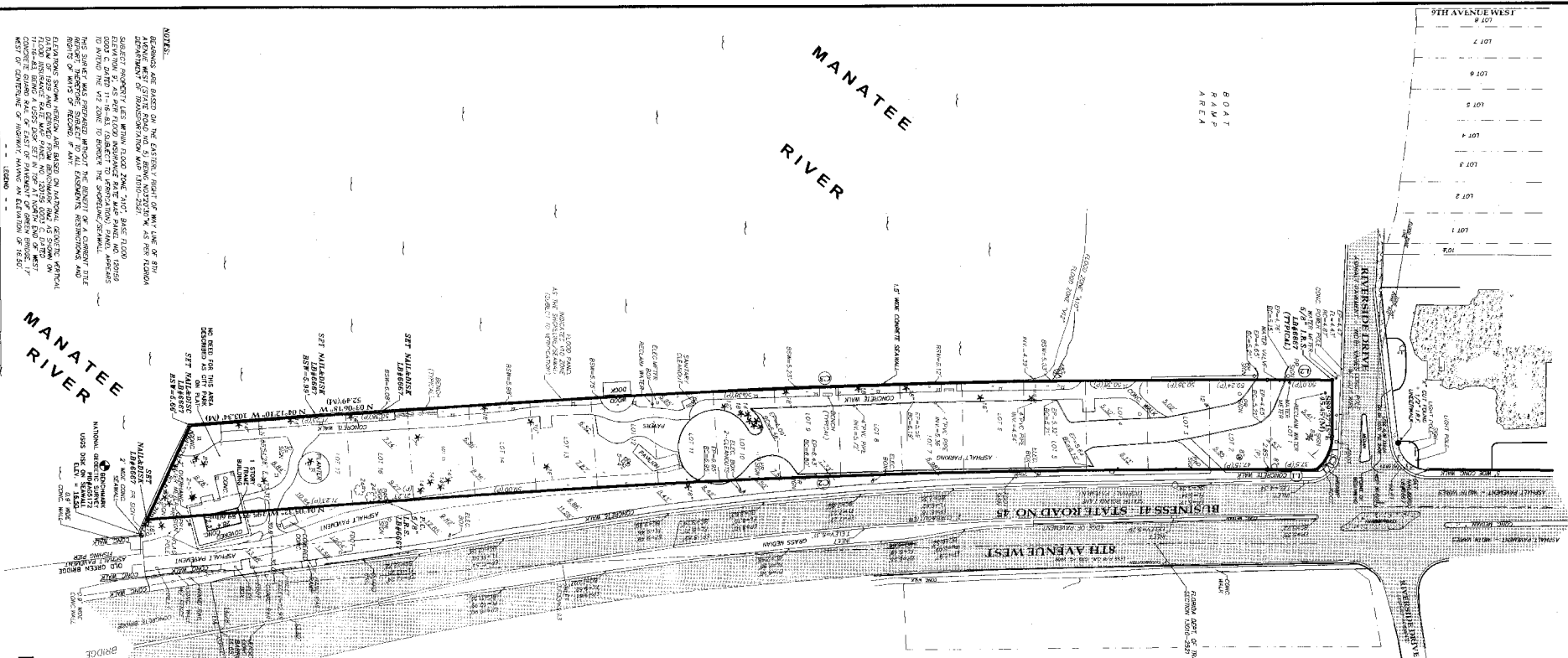
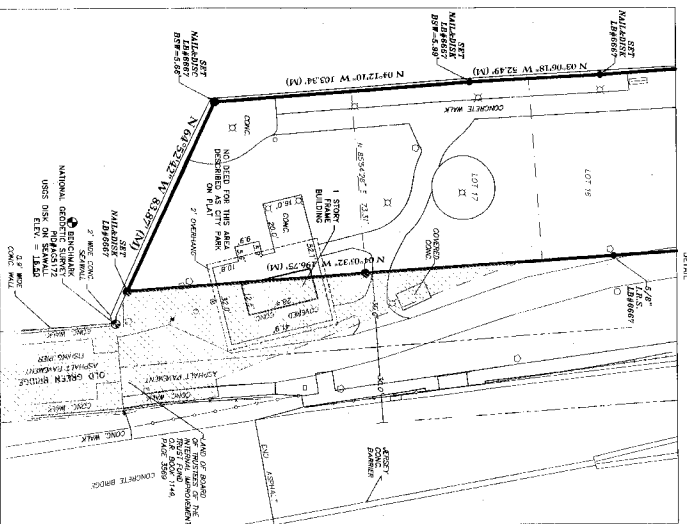
BOUNDARY SURVEY OF LOTS 1-17, BLOCK 2, SUBDIVISION - GREEN BRIDGE
 SECTION 28, TOWNSHIP 34 SOUTH, RANGE 17 EAST, AS RECORDED IN PLAT BOOK 6, PAGE 79,
 OF THE PUBLIC RECORDS OF MANATEE COUNTY, FLORIDA. PROJECT OF J. J. STUBBS/BRUNN & ASSOCIATES, INC.
 SURVEYED AND RECORDED 08/25/2011

PRELIMINARY ONLY



OWNER TABLE

LOT NO.	OWNER NAME	ACRES (APPROX.)	DATE OF ACQUISITION
1-17	MANATEE COUNTY, FLORIDA	1.00	1960
18-20	MANATEE COUNTY, FLORIDA	1.00	1960
21-23	MANATEE COUNTY, FLORIDA	1.00	1960
24-26	MANATEE COUNTY, FLORIDA	1.00	1960
27-29	MANATEE COUNTY, FLORIDA	1.00	1960
30-32	MANATEE COUNTY, FLORIDA	1.00	1960
33-35	MANATEE COUNTY, FLORIDA	1.00	1960
36-38	MANATEE COUNTY, FLORIDA	1.00	1960
39-41	MANATEE COUNTY, FLORIDA	1.00	1960
42-44	MANATEE COUNTY, FLORIDA	1.00	1960
45-47	MANATEE COUNTY, FLORIDA	1.00	1960
48-50	MANATEE COUNTY, FLORIDA	1.00	1960
51-53	MANATEE COUNTY, FLORIDA	1.00	1960
54-56	MANATEE COUNTY, FLORIDA	1.00	1960
57-59	MANATEE COUNTY, FLORIDA	1.00	1960
60-62	MANATEE COUNTY, FLORIDA	1.00	1960
63-65	MANATEE COUNTY, FLORIDA	1.00	1960
66-68	MANATEE COUNTY, FLORIDA	1.00	1960
69-71	MANATEE COUNTY, FLORIDA	1.00	1960
72-74	MANATEE COUNTY, FLORIDA	1.00	1960
75-77	MANATEE COUNTY, FLORIDA	1.00	1960
78-80	MANATEE COUNTY, FLORIDA	1.00	1960
81-83	MANATEE COUNTY, FLORIDA	1.00	1960
84-86	MANATEE COUNTY, FLORIDA	1.00	1960
87-89	MANATEE COUNTY, FLORIDA	1.00	1960
90-92	MANATEE COUNTY, FLORIDA	1.00	1960
93-95	MANATEE COUNTY, FLORIDA	1.00	1960
96-98	MANATEE COUNTY, FLORIDA	1.00	1960
99-101	MANATEE COUNTY, FLORIDA	1.00	1960
102-104	MANATEE COUNTY, FLORIDA	1.00	1960
105-107	MANATEE COUNTY, FLORIDA	1.00	1960
108-110	MANATEE COUNTY, FLORIDA	1.00	1960
111-113	MANATEE COUNTY, FLORIDA	1.00	1960
114-116	MANATEE COUNTY, FLORIDA	1.00	1960
117-119	MANATEE COUNTY, FLORIDA	1.00	1960
120-122	MANATEE COUNTY, FLORIDA	1.00	1960
123-125	MANATEE COUNTY, FLORIDA	1.00	1960
126-128	MANATEE COUNTY, FLORIDA	1.00	1960
129-131	MANATEE COUNTY, FLORIDA	1.00	1960
132-134	MANATEE COUNTY, FLORIDA	1.00	1960
135-137	MANATEE COUNTY, FLORIDA	1.00	1960
138-140	MANATEE COUNTY, FLORIDA	1.00	1960
141-143	MANATEE COUNTY, FLORIDA	1.00	1960
144-146	MANATEE COUNTY, FLORIDA	1.00	1960
147-149	MANATEE COUNTY, FLORIDA	1.00	1960
150-152	MANATEE COUNTY, FLORIDA	1.00	1960
153-155	MANATEE COUNTY, FLORIDA	1.00	1960
156-158	MANATEE COUNTY, FLORIDA	1.00	1960
159-161	MANATEE COUNTY, FLORIDA	1.00	1960
162-164	MANATEE COUNTY, FLORIDA	1.00	1960
165-167	MANATEE COUNTY, FLORIDA	1.00	1960
168-170	MANATEE COUNTY, FLORIDA	1.00	1960
171-173	MANATEE COUNTY, FLORIDA	1.00	1960
174-176	MANATEE COUNTY, FLORIDA	1.00	1960
177-179	MANATEE COUNTY, FLORIDA	1.00	1960
180-182	MANATEE COUNTY, FLORIDA	1.00	1960
183-185	MANATEE COUNTY, FLORIDA	1.00	1960
186-188	MANATEE COUNTY, FLORIDA	1.00	1960
189-191	MANATEE COUNTY, FLORIDA	1.00	1960
192-194	MANATEE COUNTY, FLORIDA	1.00	1960
195-197	MANATEE COUNTY, FLORIDA	1.00	1960
198-200	MANATEE COUNTY, FLORIDA	1.00	1960



NOTES:
 BEARINGS AND DISTANCES ON THE EASTERN RIGHT OF WAY LINE OF 8TH AVENUE WEST CENTER ROAD AND 9TH AVENUE WEST CENTER ROAD AS PER PLAT BOOK 6, PAGE 79, OF THE PUBLIC RECORDS OF MANATEE COUNTY, FLORIDA, ARE TO BE CONSIDERED AS THE TRUE BEARINGS AND DISTANCES FOR THE PURPOSES OF THIS SURVEY. THE BEARINGS AND DISTANCES ON THIS SURVEY ARE TO BE CONSIDERED AS THE TRUE BEARINGS AND DISTANCES FOR THE PURPOSES OF THIS SURVEY. THE BEARINGS AND DISTANCES ON THIS SURVEY ARE TO BE CONSIDERED AS THE TRUE BEARINGS AND DISTANCES FOR THE PURPOSES OF THIS SURVEY.

PRELIMINARY ONLY

MANATEE COUNTY, FLORIDA
 J. J. STUBBS/BRUNN & ASSOCIATES, INC.
 509 8TH AVENUE WEST
 PALM Bay, FLORIDA 32909
 (321) 728-8880 FAX (321) 728-7580

PRELIMINARY ONLY
 MODEL T SURVEY, FILE # 297
 (Manatee Survey No. 64)
 DATE OF CERTIFICATION
 BY: J. J. STUBBS/BRUNN & ASSOCIATES, INC.
 DATE OF CERTIFICATION

CLEMENTS SURVEYING, INC.
 509 8TH AVENUE WEST
 PALM Bay, FLORIDA 32909
 (321) 728-8880 FAX (321) 728-7580

BOUNDARY/TOPOGRAPHIC SURVEY
 OF
 REVERSIDE PARK WEST - GREEN BRIDGE
 LYING AND BEING IN
 SECTION 28, TOWNSHIP 34 SOUTH RANGE 17 EAST
 CITY OF PALM Bay - MANATEE COUNTY, FLORIDA